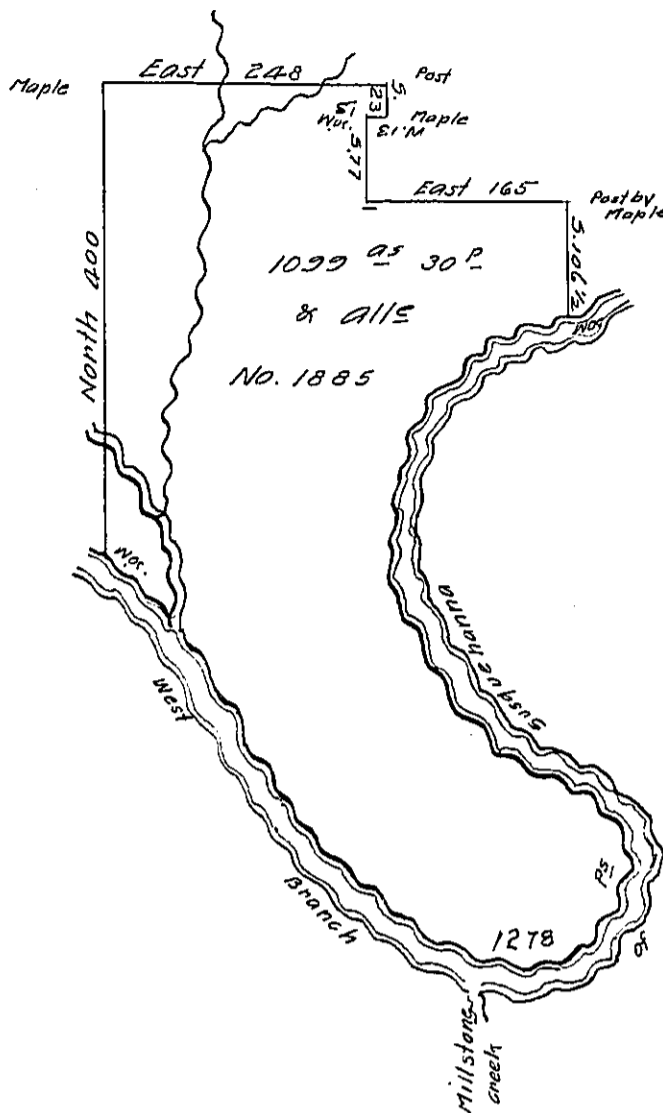


Vacant Hilly Land

The Course and Distance up the River

- S. 78 W. 73
  - S. 36 W. 144
  - S. 7 E. 178
  - S. 34 E. 80
  - S. 65 E. 125
  - S. 39 E. 29
  - S. 16 W. 33
  - S. 49 W. 82
  - S. 87 W. 18
  - S. 68 W. 34
  - N. 55 W. 63
  - N. 47 W. 63
  - N. 39 W. 357 to a Wpc.
- 1278

Their other Land



Situate on the West Branch of Susquehanna river in the Late Purchase Northumberland County District No. 3 surveyed 17<sup>th</sup> Oct<sup>r</sup> 1792, to Robert Morris & Walter Stewart on Warrant dated 20<sup>th</sup> August 1792. No. 1885. Containing one thousand & ninety nine acres, thirty pers. & allow<sup>e</sup> of six p. Cent & c.

John Canan D.S.

Dan! Brodhead Esq 5.6!

IN TESTIMONY that the above is a copy of the original remaining on file in the Department of Internal Affairs of Pennsylvania, made conformably to an Act of Assembly approved the 16th day of February, 1833, I have hereunto set my Hand and caused the Seal of said Department to be affixed at Harrisburg, this second day of January 1906

*[Signature]*  
Secretary of Internal Affairs.